



LONDON REMADE

The business of recycling

Grosvenor Waste Management Limited

Working in partnership, London Remade has helped to greatly improve the capacity of recycling infrastructure in London for plastics.

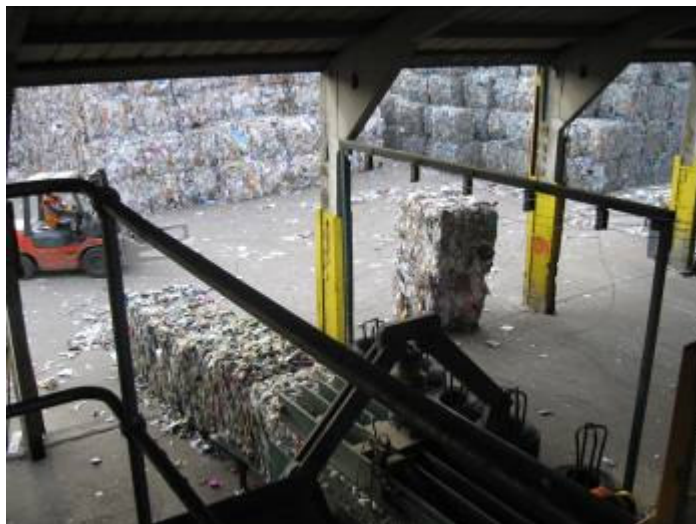
“London Remade’s assistance has been brilliant, especially with the application for funding and their ongoing strategic support.”

Mary Corin, Director of Recycling Development, Grosvenor Waste Management

Background

Grosvenor Waste Management specialises in resource management. It has a portfolio of services that include waste collection, recycling, material recovery, and infrastructure development.

This aim of this project was to add optical plastic sorting equipment to Grosvenor’s MRF, in Crayford, for segregating clear HDPE and PET from the 5,000 tonnes of mixed plastics segregated from the co-mingled waste input. This would realise Grosvenor’s ambition for the MRF. By adding a third materials sorting line it would increase the overall capacity by 50,000 tonnes per annum, to a total processing of 200,000 tonnes per annum.



Dry recyclables being baled

What happened

Grosvenor benefited from a £250,000 capital grant for investing in upgrading its plastic sorting technology.

The investment came from the London Recycling Fund, managed by London Waste Action in partnership with London Remade, as part of the London Development Agency’s (LDA) Economic Development Infrastructure Building (EDIB) project.

Through the EDIB project, London Remade supported Grosvenor with writing its bid and presentation to the London Recycling Fund board, for funding from EDIB.

Project management was given to ensure it fulfilled the terms of condition of funding, as

well as the monitoring against agreed milestones to the London Development Agency.

Ongoing operational, strategic and technical support and advice was provided throughout, as well as assistance with sourcing new supply contracts.

London Remade conducted risk assessment and assisted with the undertaking of due diligence.

General business support and assistance with writing a business plan was also given through the Enhance service.

Achievements

Grosvenor's new plastic sorting equipment has allowed for a greater throughput of recyclable plastic bottles from local authorities' kerbside collections and bring-banks.

These don't need to go through the full MRF process, freeing up processing volume for more co-mingled input.

Grosvenor invested £1.5 million into the project. Two jobs have been created and a further eight will be employed in the future as a direct result of this project.

In February 2006, Grosvenor was awarded the higher level ISO 14001.2004 standard for the provision of engineering services, improvements and management at the Crayford facility, and for the collection and transfer of recyclable materials.

Plastic diverted from landfill (tonnes)	Cost savings (£)
50,000 per year	400,000 per year
Investment (£m)	Jobs created and forecast
1.75	2 & 8

Future

The project has created a sustainable outlet for recyclable plastic bottles from London.

There is the potential for the PET and HDPE to be reprocessed locally into higher value, recycled products, thus, providing closed loop solutions for priority recyclable materials. Grosvenor extracts 2,500 tonnes of plastic bottles each year. The fractions of plastic are currently baled for shipment to various markets where the grades are separated and remanufactured into such products as land drainage piping (HDPE), fleeces and car upholstery (PET).



Dry recyclables being tipped

Contact details

Mary Corin
Director of Recycling Development
Grosvenor Waste Management
Century Wharf
Crayford Creek
Crayford DA1 4QG
01322 337 770
mcorin@grosvenorwaste.co.uk
www.grosvenorwaste.co.uk

Jamie Blake
Director, Resource Management
London Remade
1 Quality Court
Chancery Lane
London WC2A 1HR
020 7061 6362
jamie@londonremade.com
www.londonremade.com


grosvenor

LONDON
DEVELOPMENT
AGENCY

Supported by

THE LONDON RECYCLING FUND

